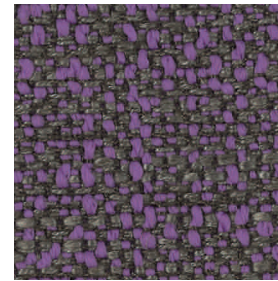


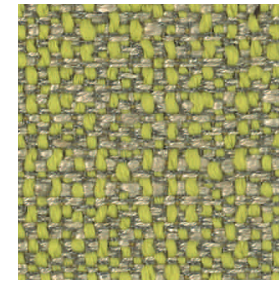
kiwi



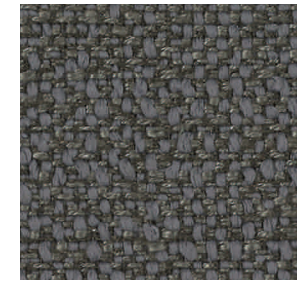
beere



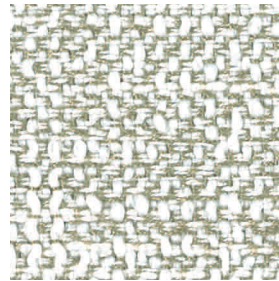
flieder



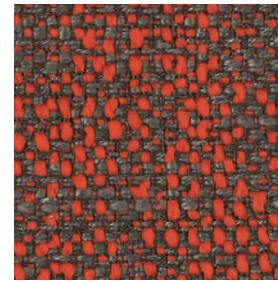
limette



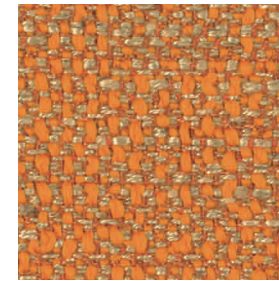
muskat



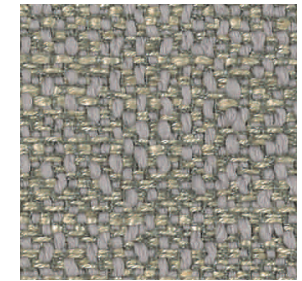
natur



orange



safran



sand



schoko



schwarz



stein

Tango

Flachgewebe
in Boucle-Optik

Stoffgruppe E

41% VI, 39% L, 10% LI, 8% CO, 2% PCI

Scheuertouren: 20.000

Lichteinheit: 3 - 4

Pillingbildung: 3

signature[®]
bewegende Formen