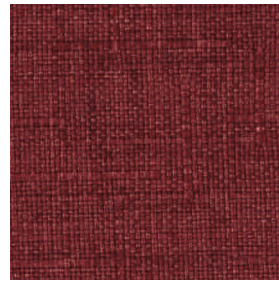
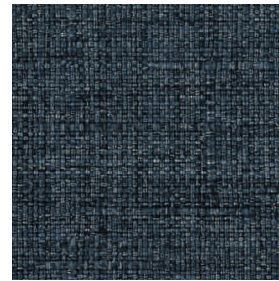




honig



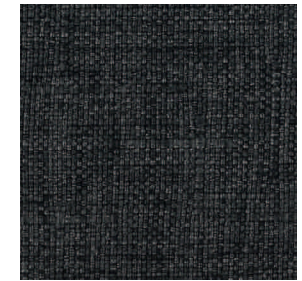
chillischote



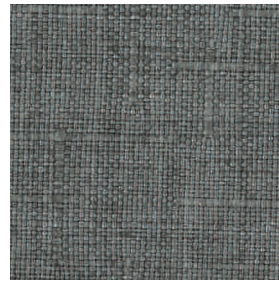
denim



erde



graphit



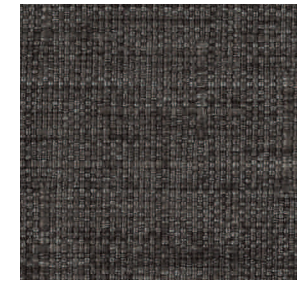
silberschilf



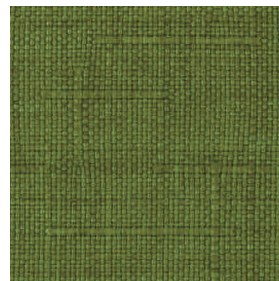
kaffee



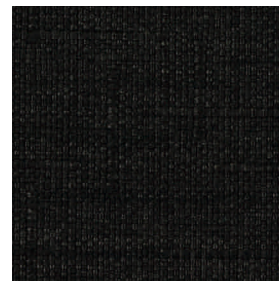
lavendel



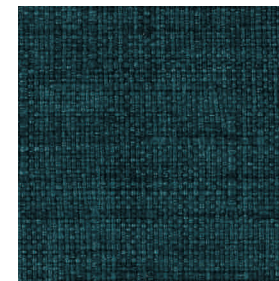
muskat



oliv



onyx



seegrün



sesam

## Sam

Flachgewebe, Oberfläche flaches Dessin mit Fleckschutzausrüstung und Polarfleecekaschierung

Stoffgruppe B

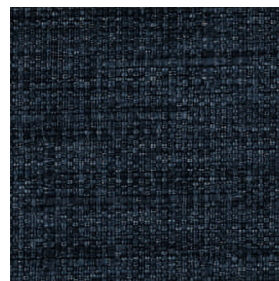
100% PES

Scheuertouren: 50.000

Lichtechtheit: 4

Pillingbildung: 4

*signature*  
bewegende Formen



tintenblau



veilchen



weiss